

BROADCAST

solutions specialist

Since 1986



Audiovisual and Event



Optical fiber to transport the streams Voice, data, images ...

(FO VDI): mono / multi mode fiber) ... and low current

We have **the largest mounting capacity of hybrid connectors**
in FRANCE **certified** by:

LEANARE

LEMO

fischer
CONNECTORS

NEUTRIK

SALE
OF
CABLES

&

CABLES
RENTAL



- opticalCON DUO Connector



- opticalCON QUAD Connector



- OPTicalCON MTP Connector



- MTP Cable



- SMPTE Cable (hybrid)





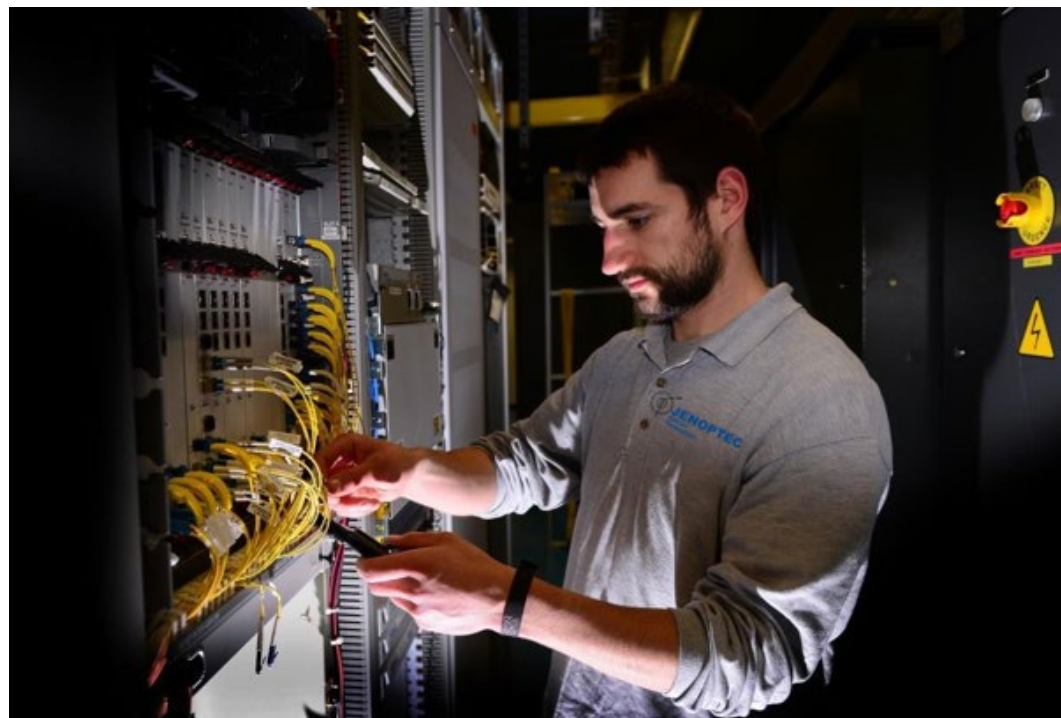
Support

We accompany our Broadcasters customers on the events to cover (Le Tour de France, Roland Garros, Les 24H du Mans, Le Vendée Globes ...) but also on fixed installations like the TV sets of la Seine Saint Denis (France Televisions, TF1, M6) ...





Interventions



- **Network analysis**
- **Network validation**
- **Recipe statement**

AMPVISUALTV . FRANCETÉLÉVISIONS

24H du Mans - Fan Zone - Fort Boyard - Le Tour de France
Le Vendée Globe – TV sets of TF1 and M6 Roland Garros...

24h
LE MANS



1, 2, 3, GO !



Our P-FIBER



This optical fiber transmission system is designed to work with all PTZ-type robotic cameras (JVC, PANASONIC, SONY ...). Perfect for uses as diverse as live production, event capture and studio applications wherever fiber is needed for its ease of use.

Exists in
4K
version

Robust and compact design, it allows the transport on the fiber of all the functionalities necessary for the use of a camera:
SOI, Ethernet, Power ...



Our EXTENDER



The Case, very compact and robust, integrates the power supply, AC or DC on demand. A standard M10 thread is anchored to one of the sidewalls for quick, stable and secure mounting of housings wherever it is needed.

Our Extenders allow to **simultaneously transmit an HDMI video stream and a Ggbit Ethernet link up to several kilometers** apart using a single duplex optical fiber. All video and graphics resolutions are **supported up to 2160p**.

The management of EDIDs is transparent between the sender and the receiver. The Ethernet link is in 10/100/1000 auto-negotiation, half or full duplex and has two RJ45 ports in Switch mode at each end.



Our MEDIA CONVERTERS



We offer a whole range of media converters allowing to transmit simultaneously in both directions of SDI signals on Fiber Optics. They detect and automatically adapt to **SD, HD, 3G, SOI, Ethernet ...**

Our latest versions support **UHD** and **4K**.

All our products are also available in **customized version** according to your needs.
We mount all types of connectors.
CANARE – FISCHER – LEMO - NEUTRIK



Our optical CASE / BUNDLE

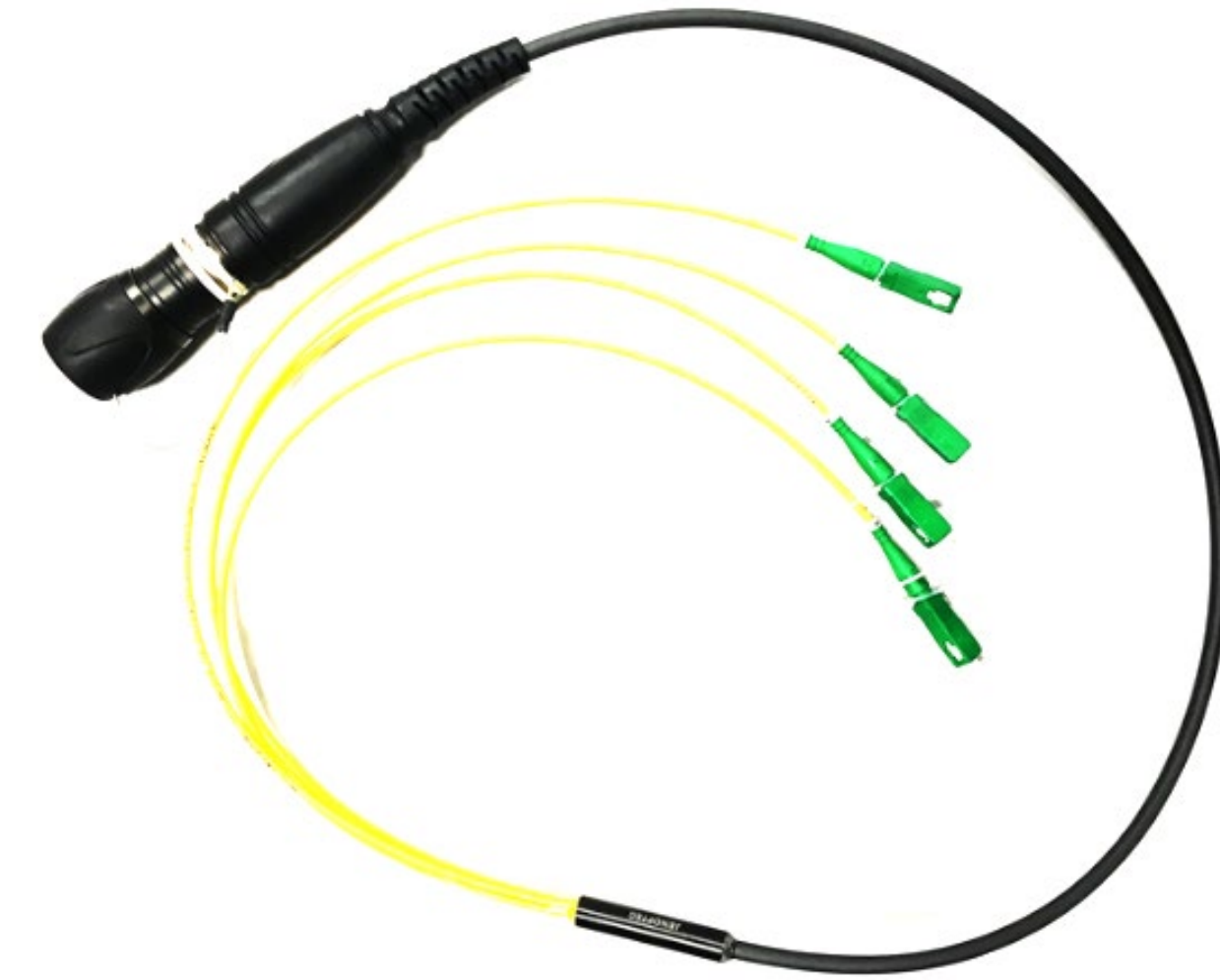
This converter exists as a customizable **CASE** or **BUNDLE**



4 SC/APC MONO



1 SERIE D OpticalCON QUAD



OpticalCON QUAD to
SC/APC

Our optical SPLITTERS

Our Splitters range has been developed specifically for professional video applications. The robust external envelope in Delrin can be totally customized.



Splitter 1X2 SC/PC MULTI 50/50



Splitter 1X2 LC/PC MONO 10/90

These SPLITTERS are **customizable** from the connection to the engraving of the case

Our DISTRIBUTORS

These distributors are compatible **SMPTE259M** (SD SDI), **SMPTE292M** (HD SDI), **SMPTE 424M** (3G SDI) and exist in versions **1x4SDI** et **1X30SDI**.



Also available in version **12G SDI SMPTE ST2082**.



The input signal is cleaned and reclocked before being duplicated. On the other hand, an integrated automatic cable equalizer allows links up to 210 meters at 2.97 Gb/s, 300 meters at 1.485 Gb/s and 550 meters at 270 Mb/s.

Our optical MULTIPLEXERS

Our Muxlan rack optics, the **LS-CSEF-xTxR-RA**, can transmit up to **15 3G SDI** streams in both directions (8 + 8) and a 10/100/1000 Mbps Ethernet link on only two or four singlemode fibers depending on the optical plug used. It has a control panel on its front side.



Our specific CABLES

We also provide all types of fiber optic cables.
All our cables are **customizable** (coating, color,
length, marking, connectorisation ...)

Multi Hybrid

3XSMPTE 9,2mm Under sock



MPO IP SERIES SENKO

Connector



Our Components

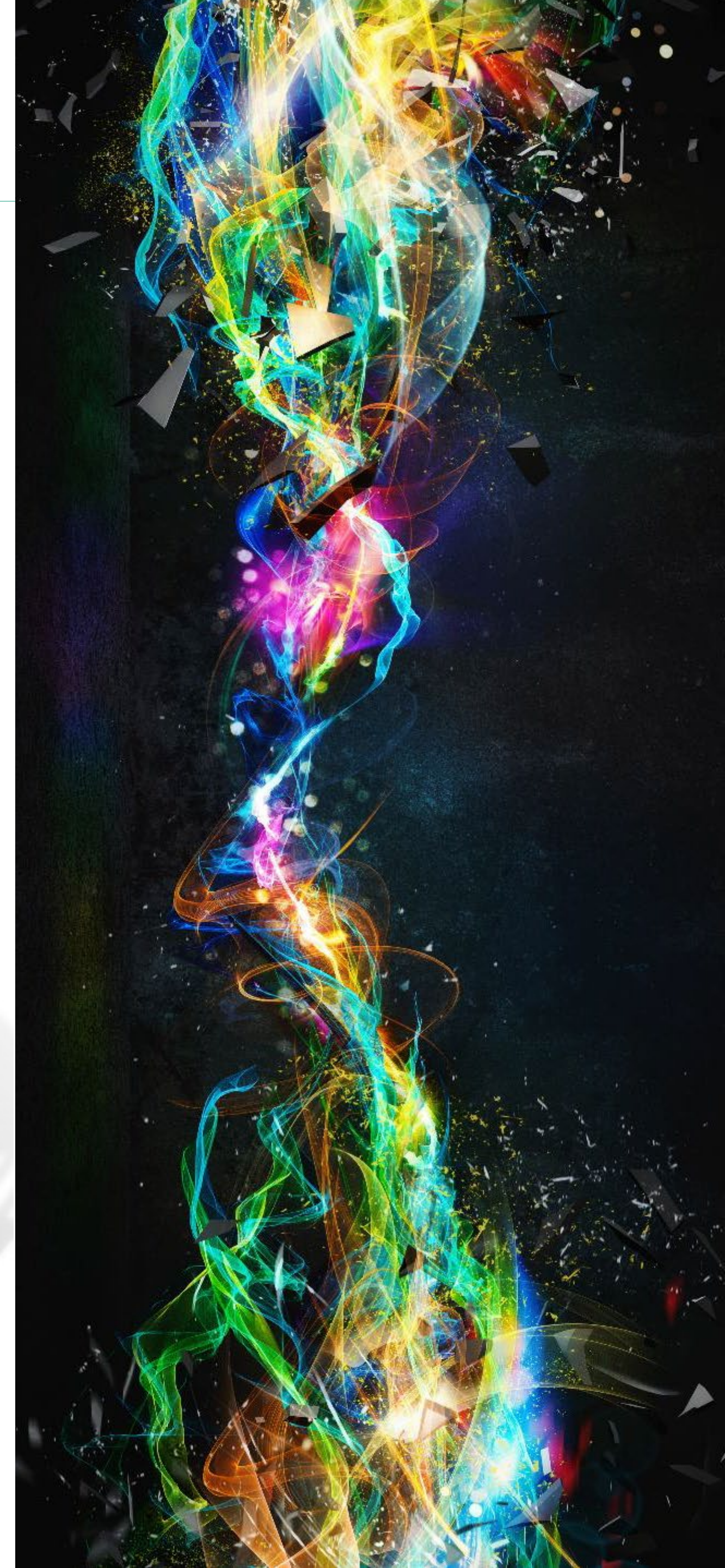
ENOPTEC is the exclusive distributor of LUMENTUM in France, leader in the SFP market



Our new product line allows us to meet market demands as well as changing **bandwidth** requirements in the different **DATA CENTERS** while reducing costs, enabling us to **ensure customer satisfaction** while maintaining continuing to innovate on future projects.

SFP+:SR, LR, ZR, DWDM Tunable

QSFP28 100G LR4 PSMY



Measurement and Tooling



- Photometer



- Reflectometer



- Optical traffic detection clip



- Optical pen



- Primer suitcase



- Optical welder



- Cleaver



- Optical jumpers



- Cleaning kit



Our Broadcast contact

Jérémy DABARD

12 rue Jean-Baptiste Huet - Les Metz
78350 Jouy-en-Josas

Phone: +33(01) 34 65 99 30

Mobile: +33(06) 75 45 91 85

Email: jeremy.dabard@jenoptec.com

